

**FOR LEASE**



*1589 PORT REPUBLIC ROAD  
SUITE 4  
HARRISONBURG, VA 22801*

**1,250 SF**

- **PRIME LOCATION** BETWEEN **JMU** AND **RMH**
- **HIGH-TRAFFIC** PORT REPUBLIC ROAD FRONTAGE
- **ON-SITE SIGNAGE** WITH **STRONG VISIBILITY**
- QUICK ACCESS TO **I-81** AND **SE CONNECTOR**
- **NO CAM** CHARGES
- SUITABLE FOR **OFFICE, RETAIL, OR SERVICE** USE

**\$1,795/MONTH**



**Jeff Robb**

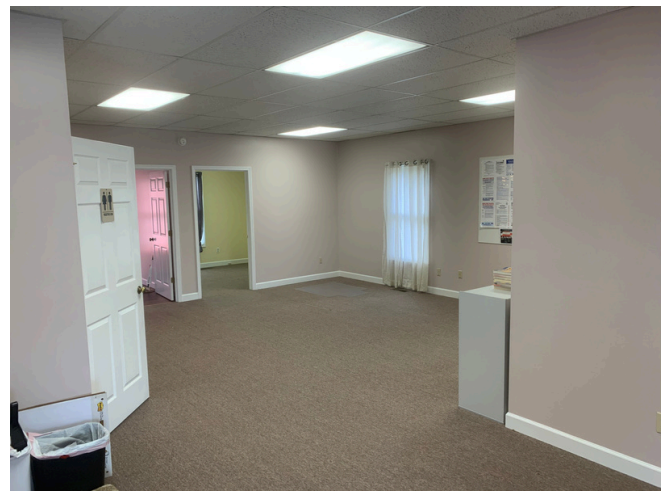
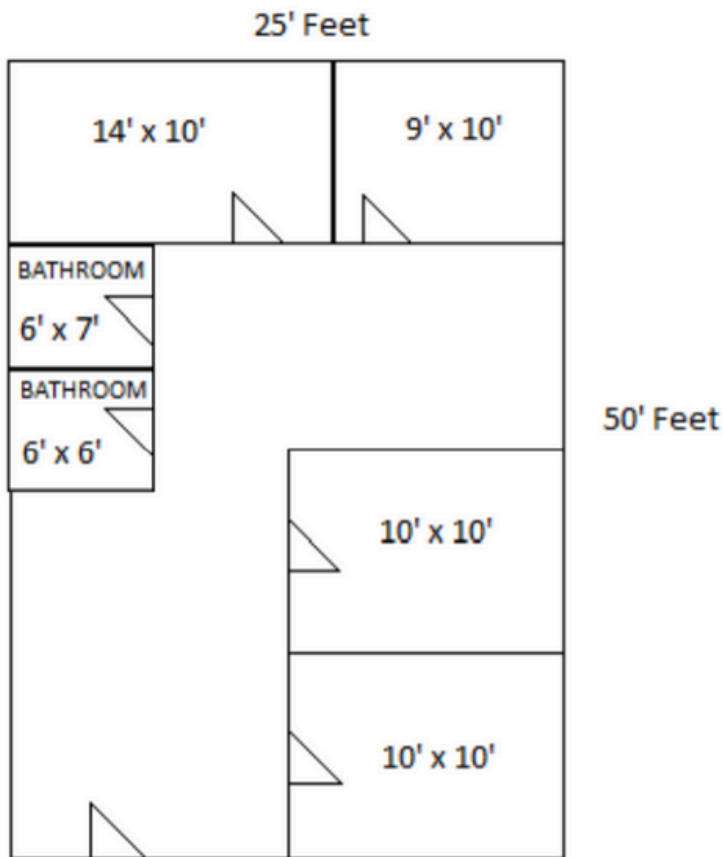
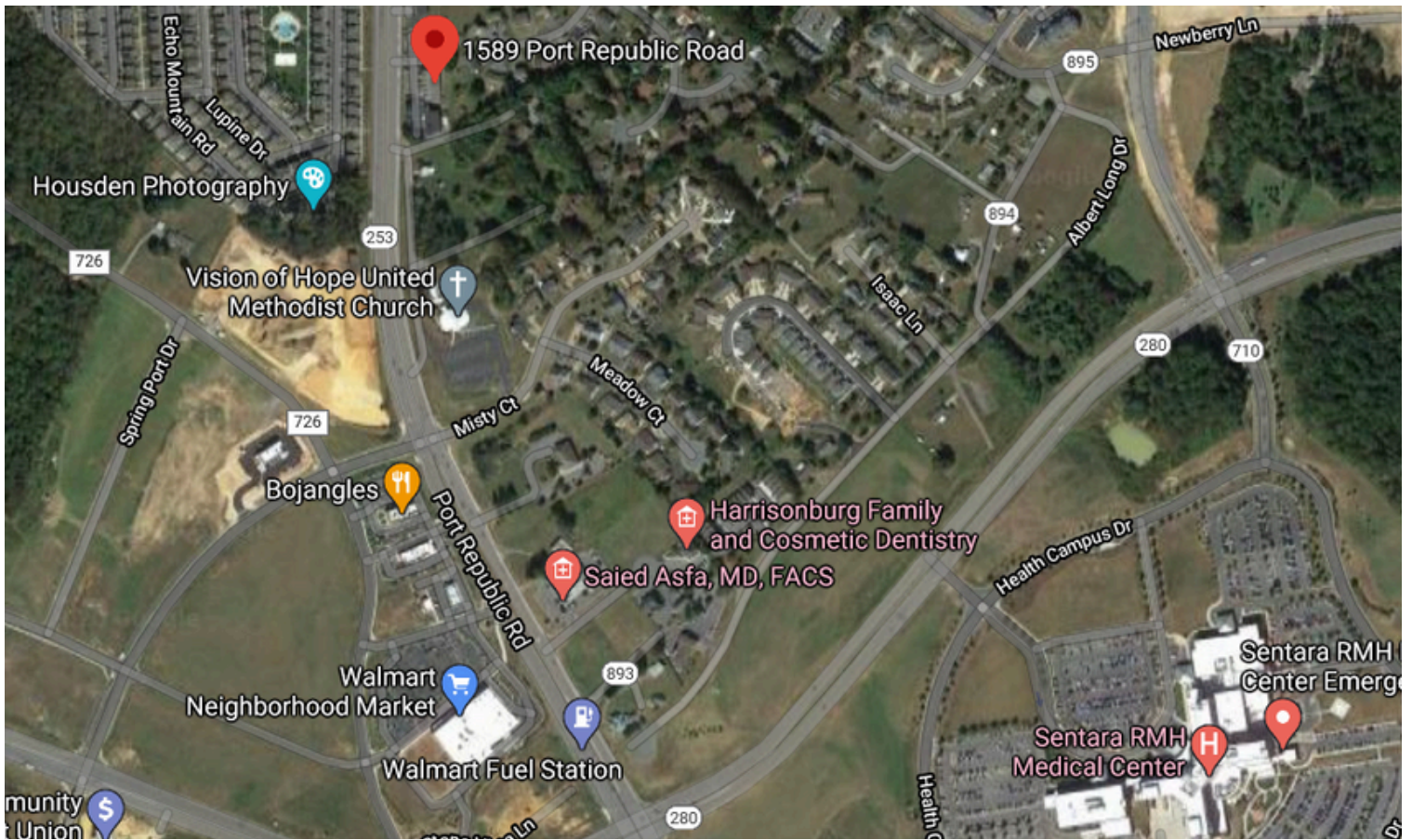
Jeffreymrobb@gmail.com

540-478-7616

leeandassoc.com

**Lee & Associates**  
COMMERCIAL REAL ESTATE BROKERAGE





All information herein, Including square footage and acreage, is believed to be accurate, but not guaranteed or warranted. Any and all parties are responsible for verifying information prior to leasing or purchasing.