

FOR LEASE

847 MARTIN LUTHER KING JR WAY
HARRISONBURG, VA 22801

Lee & Associates
COMMERCIAL REAL ESTATE BROKERAGE



PROPERTY DETAILS

- 11,482 Square Feet
- Perfect layout for any office with private offices, conference space and lobby/reception area
- Large open parking lot with easy access off of Martin Luther King Jr Way
- Professional signage and beautiful curb appeal with visibility from Martin Luther King Jr Way

\$14.95/SF/YR - NNN LEASE



Jeff Robb | jeffreymrobb@gmail.com | 540-478-7616 | leeandassoc.com

FOR LEASE

847 MARTIN LUTHER KING JR WAY
HARRISONBURG, VA 22801

Lee & Associates
COMMERCIAL REAL ESTATE BROKERAGE



Jeff Robb | jeffreymrobb@gmail.com | 540-478-7616 | leeandassoc.com

All information herein, including square footage and acreage is believed to be accurate, but not guaranteed or warranted. Any and all parties are responsible for verifying information prior to leasing or purchasing.

FOR LEASE

847 MARTIN LUTHER KING JR WAY
HARRISONBURG, VA 22801

Lee & Associates
COMMERCIAL REAL ESTATE BROKERAGE



Jeff Robb | jeffreymrobb@gmail.com | 540-478-7616 | leeandassoc.com

All information herein, including square footage and acreage is believed to be accurate, but not guaranteed or warranted. Any and all parties are responsible for verifying information prior to leasing or purchasing.

FOR LEASE

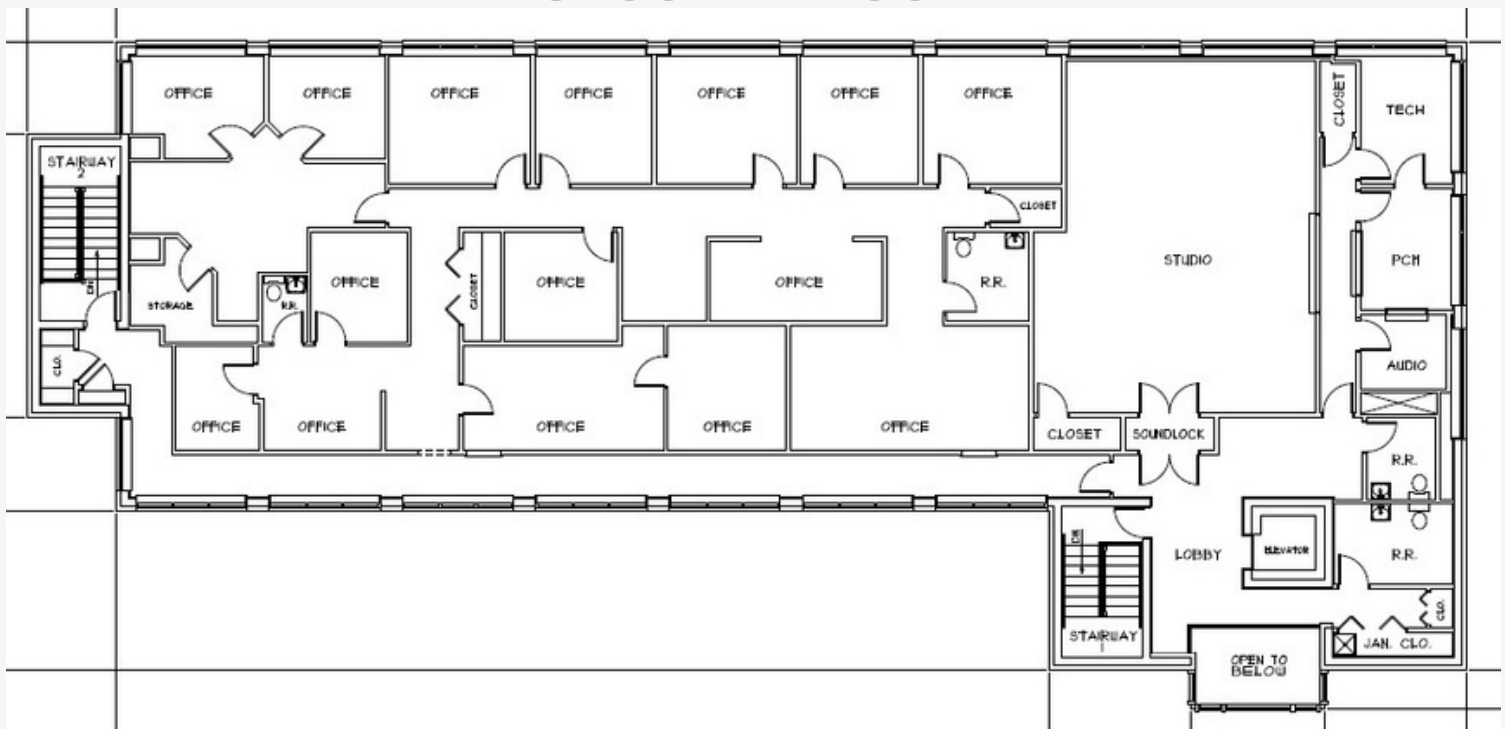
847 MARTIN LUTHER KING JR WAY
HARRISONBURG, VA 22801

Lee & Associates
COMMERCIAL REAL ESTATE BROKERAGE

FIRST FLOOR



SECOND FLOOR



Jeff Robb | jeffreymrobb@gmail.com | 540-478-7616 | leeandassoc.com

All information herein, including square footage and acreage is believed to be accurate, but not guaranteed or warranted. Any and all parties are responsible for verifying information prior to leasing or purchasing.